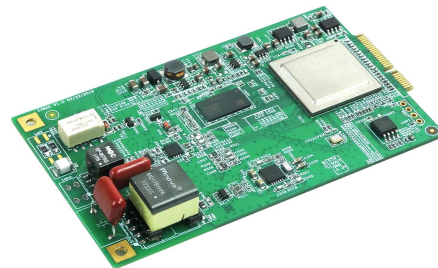


IV820: g.fast vdsl2,ITU full profile vdsl2,30a vdsl2,Gigabit vdsl2

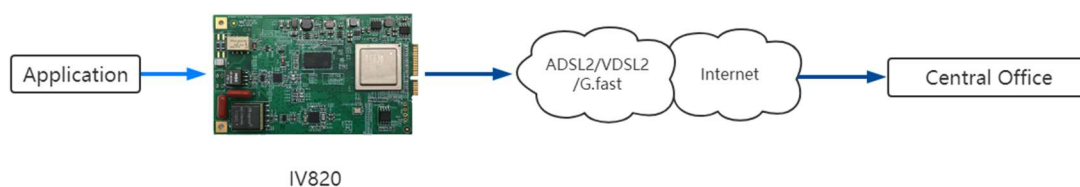
- VDSL2 Full profile
8a/12a/17a/30a/35B Module
- Compatible with
ADSL/ADSL2+/VDSL/VDSL2
- Support G.fast
- Mini PCI-E interface
- 1 LAN 1000M, 1 LAN 100M
- DC 3.3V input
- 1 RS232 Interface(CLI Interface,
TTL level)
- Support USB2.0 Host/Device
- Equipped with multiple I / O
interface
- Temperature Range:-40°C to 70°C



IV820 uses the very powerful Broadcom xDSL chipset processing engine is a 1Ghz dual-core ARM cortex A9,with 32KB I/D cache,and 512KB L2 cache. It is high-performance xDSL module compatible with ADSL/ADSL2+/VDSL/VDSL2/G.fast for industrial application.

Applications

- High-end xDSL tester
- VDSL2 router/HGU/IAD
- Industrial/Embeded Computer



	Item	IV02	IV820
VDSL2 profile	8a, 8b, 8c, 8d, 12a, 12b	Yes	Yes
	17a	Yes	Yes
	30a	No	Yes
	35B	No	Yes
	G.Fast(106MHz)	No	Yes
Annex B/J		Yes	Yes
G.Vector		Yes	Yes
G.INP		Yes	Yes
G.Bonding		No	No
LAN		100M Ethernet	Gigabit Ethernet
Power consumer		2.5w	4.5W

DSL standards	ADSL over POTS with Annex A and Annex B ITU G. 992.1 (ADSL), G.992.3 (ADSL2), and G.992.5(ADSL2+) ADSL over POTS with Annex M (extended upstream bandwidth) G.992.3 (ADSL2) and G.992.5 (ADSL2+) ADSL2+:Max24Mbps(downstream)max1Mbps(upstream) VDSL2
Line Speed	(G.993.2) 35B(G.993.2) G.fast(G.9701): Max 1000Mbps(downstream,upstream)
DSL line length	Max 5.5km

IP and Network Features

Operating Modes Bridge/PPPoE/PPPoA/DHCP/IPoA/IPoE

Ports and Connectors

DSL	1 DSL
Serial Ports	RS232 interface (CLI Interface, TTL level);
LAN	1LAN 10/100Mbps, 1LAN 10/100/1000Mbps, MDI/MDI-X
Power Supply	DC/3.3V input, max 6W on full loaded

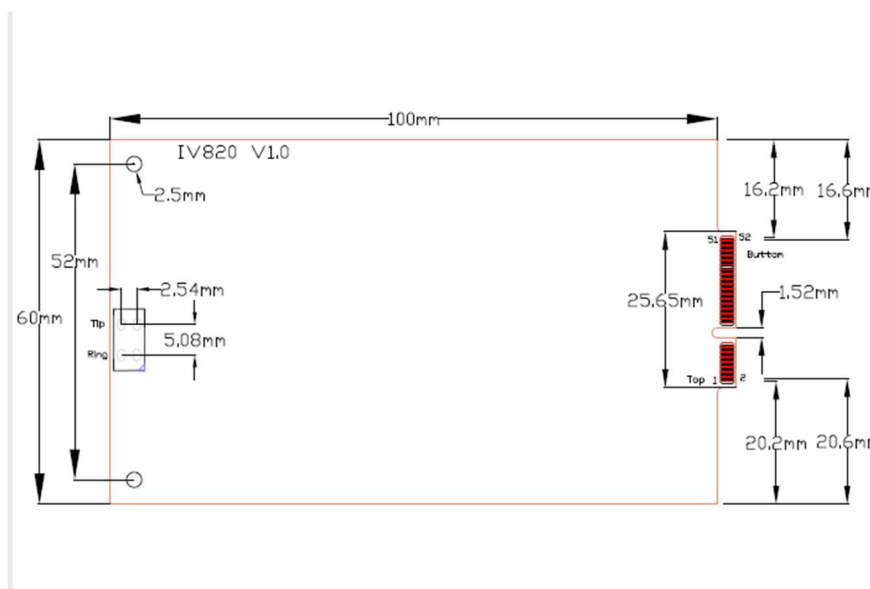
Mechanical Data

Size	100x60x17(LxWxH) mm
Weight	90g
Environmental Conditions	-40 to 70°C(Operation)5 to 95%(not condensing)

Configuration and Management

Configuration Web-based(HTTP) CLI(Command Line Interface) Telnet

Mechanical Structure



Order Information

Product Description
Industrial VDSL2/ADSL2 Module

Order Code
IV820